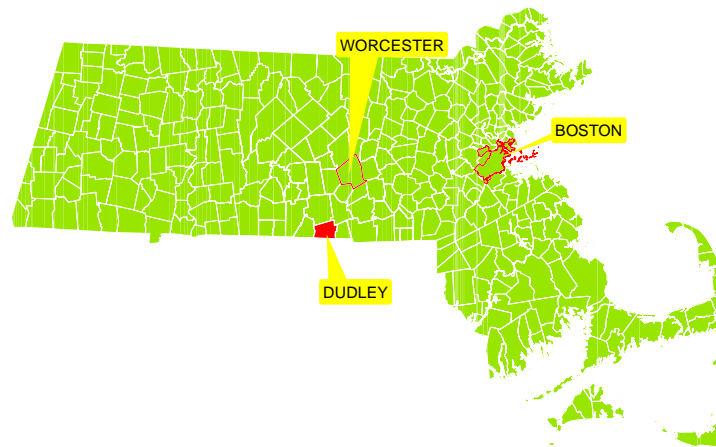


## TOWN OF DUDLEY, MASSACHUSETTS



### **Location:**

It is in south central Massachusetts, bordered by Southbridge on the west; Charlton on the north; Oxford on the northeast; Webster on the east; and Woodstock and Thompson, Connecticut, on the south. Dudley is about 22 miles south of Worcester and 59 miles southwest of Boston.

- Total Area: 22.06 sq. miles
- Land Area: 21.05 sq. miles
- Population: 11,390
- Density: 516 per sq. mile

### **This snapshot contains details about the following items:**

- Population
- Economy
- Land use
- Housing
- Public Safety
- Education
- Transportation
- Traffic Safety

### **Data Sources:**

The Massachusetts Department of Transportation / Geographic Information Systems / Education / State Police / Division of Unemployment Assistance / Housing and Community Development, The US Census Bureau, Massachusetts Association of Realtors, Massachusetts Institute for Social and Economic Research (MISER), The Warren Group and massbenchmarks.org.

# Community Snapshot

## Dudley

This snapshot contains data on:

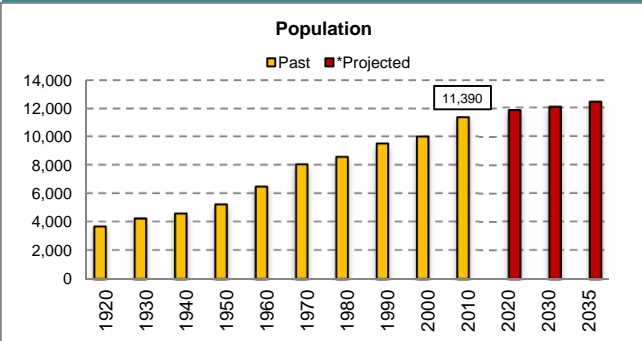
Population-Economy-Housing-Education-Transportation-Public Safety

Central Massachusetts Regional Planning Commission



www.cmrpc.org

### POPULATION



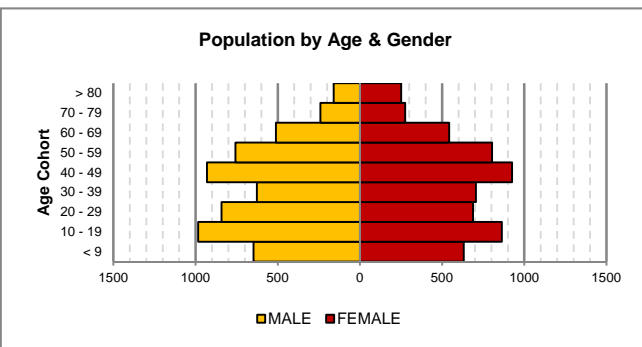
Source: US Census

\*CMRPC Projections approved March 2011

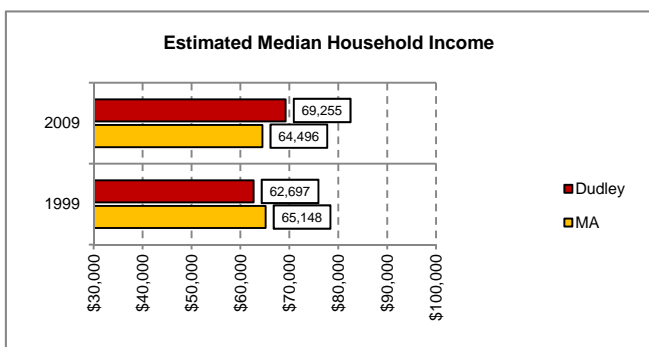
### ECONOMY



Source: MA Division of Unemp. Assist.

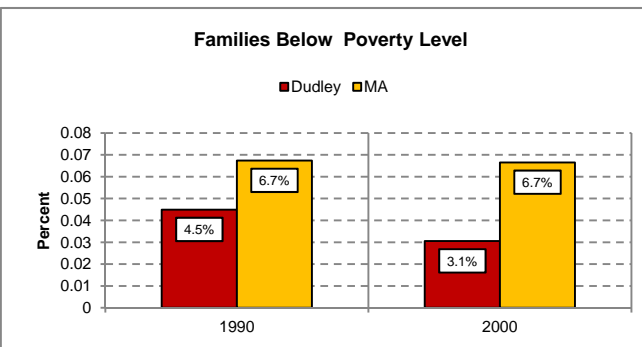


Source: US Census 2010

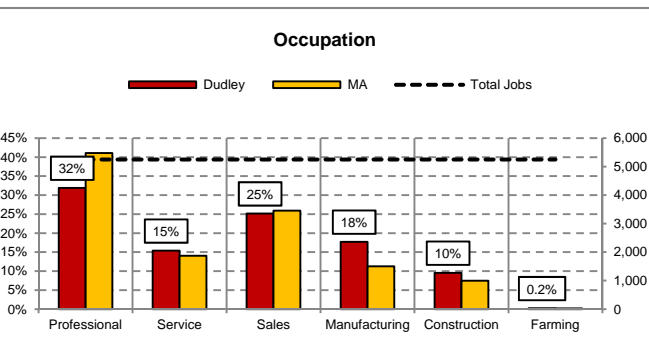


Source: American Community Survey

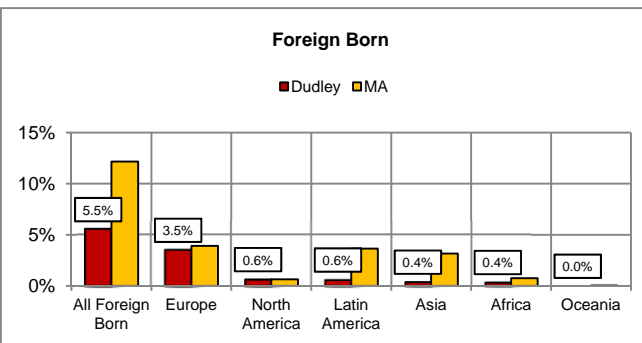
2009 inflation-adjusted dollars



Source: massbenchmarks.org

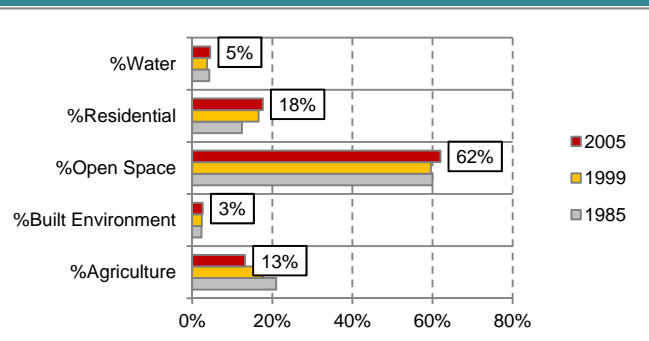


Source: US Census



Source: US Census

### LANDUSE



Source: MassGIS

Find Excel version of these tables at: <http://www.cmrpc.org/Stats-Demographics>

# Community Snapshot

## Dudley

This snapshot contains data on:

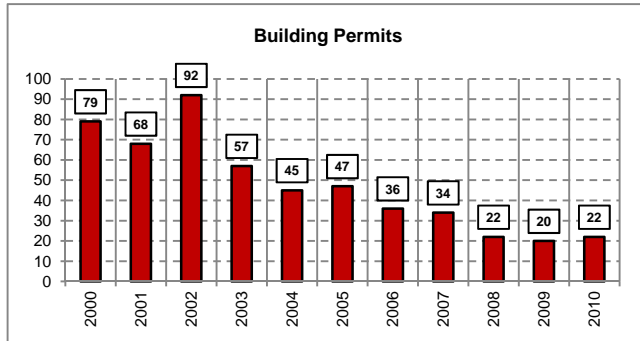
Population-Economy-Housing-Education-Transportation-Public Safety

Central Massachusetts Regional Planning Commission



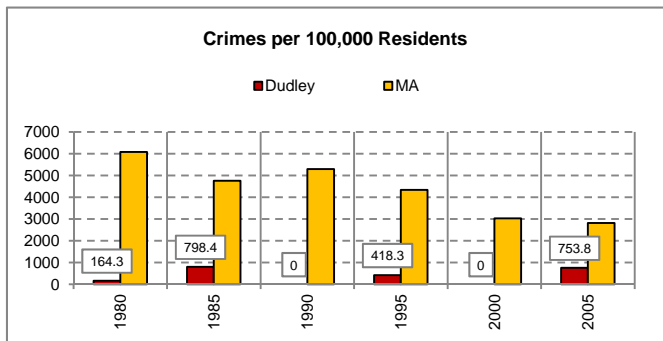
www.cmrpc.org

### HOUSING

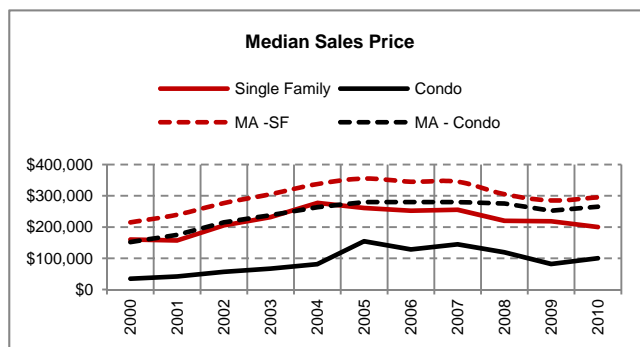


Source: CMRPC / MISER / US Census

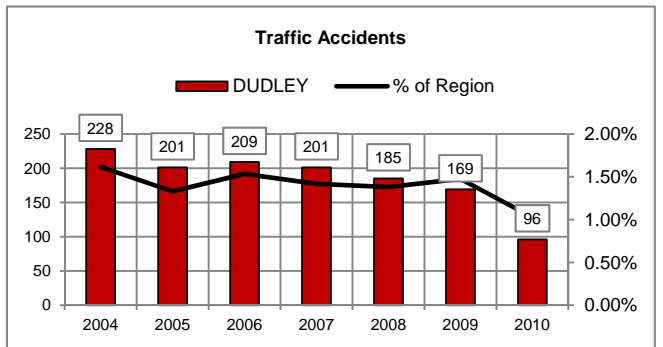
### PUBLIC SAFETY



Source: MA State Police



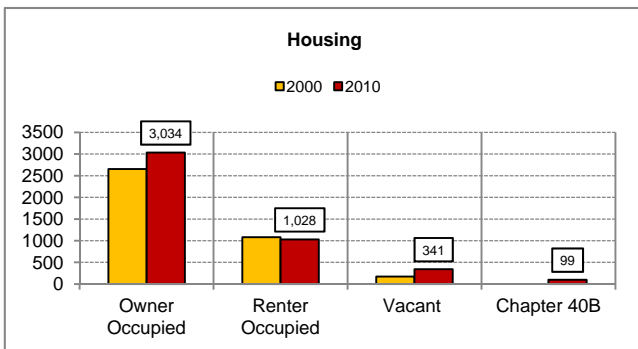
Source: The Warren Group/Mass. Assoc. of Realtors



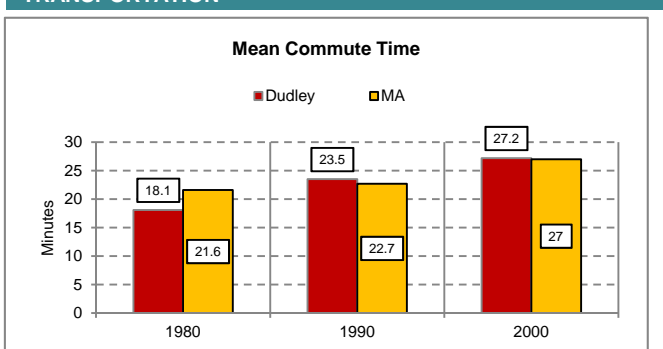
Source: Mass DOT Highway

State & Local Police Jurisdiction

### TRANSPORTATION

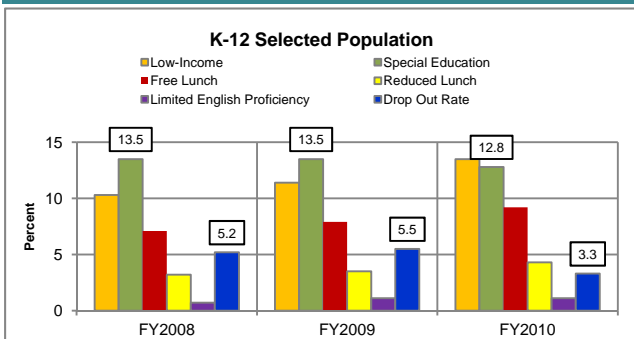


Source: US Census

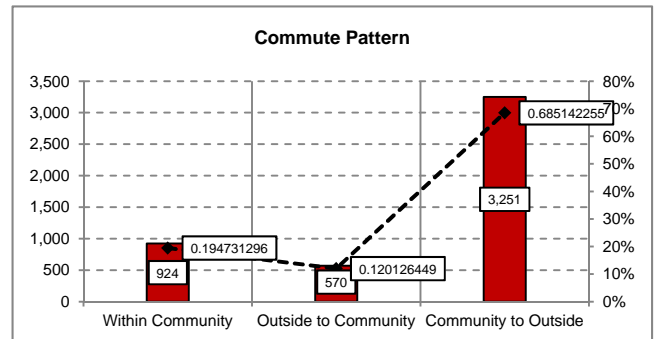


Source: US Census

### PUBLIC SCHOOLS



Source: MA Dept of Education



Source: US Census 2000

Find Excel version of these tables at: <http://www.cmrpc.org/Stats-Demographics>

# Community Snapshot

## Dudley

This snapshot contains data on:

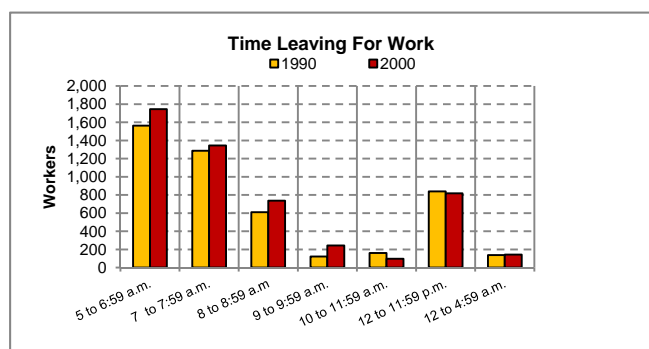
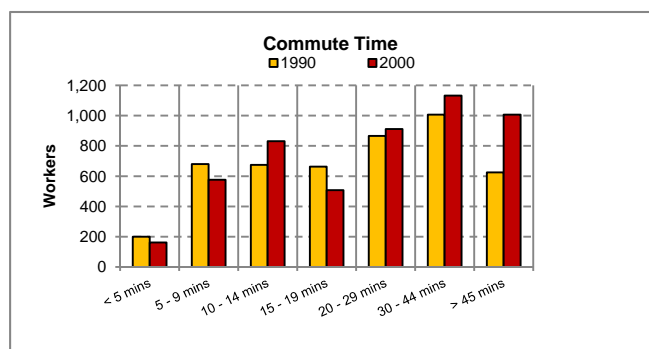
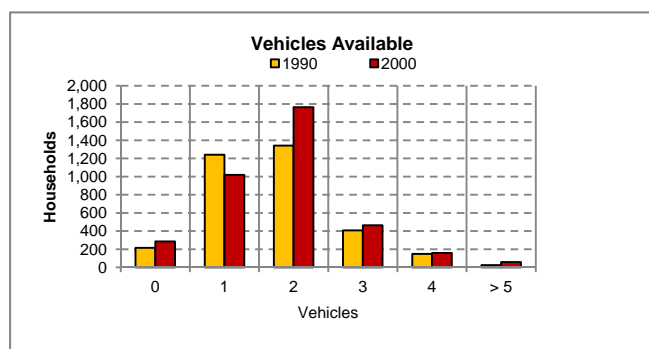
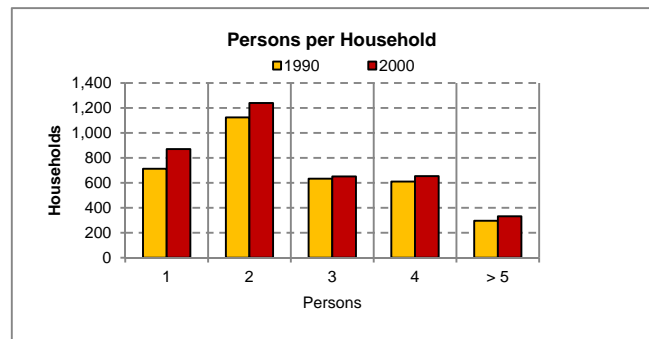
Population-Economy-Housing-Education-Transportation-Public Safety

Central Massachusetts Regional Planning Commission



www.cmrpc.org

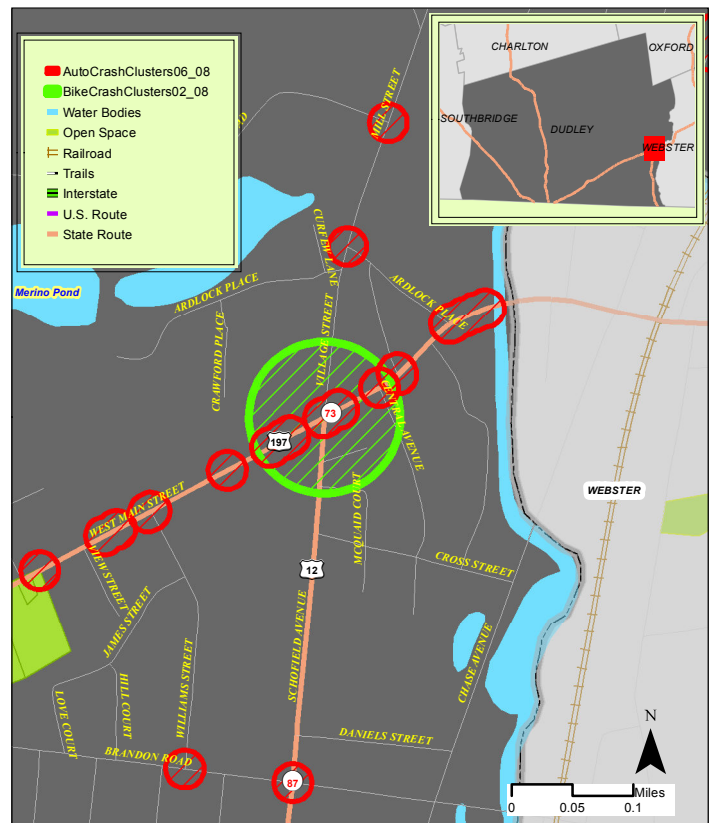
POPULATION			
	1990	2000	% Change
Total Population	9,540	10,036	5.2%
In households	8,957	9,599	7.2%
In group quarters	583	437	-25.0%
PERSONS PER HOUSEHOLD			
Total Households	3,376	3,746	11.0%
1	713	870	22.0%
2	1,124	1,239	10.2%
3	633	651	2.8%
4	610	654	7.2%
> 5	296	332	12.2%
Mean persons / household	3	3	-3.4%
VEHICLES AVAILABLE			
Total Households	3,376	3,746	11.0%
0	215	285	32.6%
1	1,241	1,018	-18.0%
2	1,341	1,764	31.5%
3	407	463	13.8%
4	148	158	6.8%
> 5	24	58	141.7%
Mean vehicles / household	2	2	5.7%
WORKERS BY GENDER			
Workers 16 years and over	4,841	5,205	7.5%
Male	2,565	2,735	6.6%
Female	2,276	2,470	8.5%
COMMUTE MODE			
Workers 16 years and over	4,841	5,205	7.5%
Drive Alone	3,898	4,443	14.0%
Carpool	532	492	-7.5%
Transit / Taxi	16	17	6.3%
Bike / Ped	210	137	-34.8%
Motorbike	60	38	-36.7%
Work at home	125	78	-37.6%
COMMUTE TIME			
Workers not working at home	4,716	5,127	8.7%
< 5 mins	200	162	-19.0%
5 - 9 mins	680	576	-15.3%
10 - 14 mins	675	831	23.1%
15 - 19 mins	663	508	-23.4%
20 - 29 mins	866	911	5.2%
30 - 44 mins	1,007	1,132	12.4%
> 45 mins	625	1,007	61.1%
Mean travel time to work (mins)	24	27	15.7%
TIME LEAVING FOR WORK			
Workers not working at home	4,716	5,127	8.7%
5 to 6:59 a.m.	1,563	1,744	11.6%
7 to 7:59 a.m.	1,286	1,344	4.5%
8 to 8:59 a.m.	610	737	20.8%
9 to 9:59 a.m.	121	244	101.7%
10 to 11:59 a.m.	160	97	-39.4%
12 to 11:59 p.m.	839	818	-2.5%
12 to 4:59 a.m.	137	143	4.4%



Source: Census Transportation Planning Package (CTPP 2000)

Find Excel version of these tables at: <http://www.cmrpc.org/Stats-Demographics>

**This snapshot contains data on:**  
**Population-Economy-Housing-Education-Public Safety -Transportation**  
**Central Massachusetts Regional Planning Commission**



NB : Color Coded # is Regional Rank

Auto Crash Clusters 2006-2008	Community	Sum Crash	Fatal Crash	Injury Crash	<sup>1</sup> PDO Crash	<sup>2</sup> EPDO	<sup>3</sup> HSIP Eligible
WEST MAIN ST / VILLAGE ST / SCHOFIELD AV	DUDLEY	34	0	4	30	50	Yes
WEST MAIN ST / AIRPORT RD	DUDLEY	17	0	5	12	37	Yes
BRANDON RD / SCHOFIELD AV / BRANDON RD	DUDLEY	18	0	4	14	34	Yes
WEST MAIN ST / PAGLIONE / MASON RD	DUDLEY	18	0	4	14	34	Yes
<b>Pedestrian Crash Clusters 2006-2008</b>							
NONE	DUDLEY	0	0	0	0	0	0
<b>Bike Crash Clusters 2006-2008</b>							
WEST MAIN ST / VILLAGE ST	DUDLEY	2	0	2	0	10	No
Total Auto Crashes 2006-2008	DUDLEY	569	2	152	415	1,195	
Total Pedestrian Crashes 2006-2008	DUDLEY	1	0	1	0	5	
Total Bike Crashes 2006-2008	DUDLEY	2	0	1	1	6	

Source : Mass DOT Highway

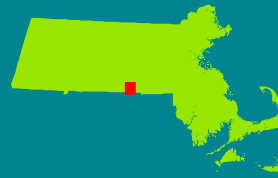


# Community Snapshot

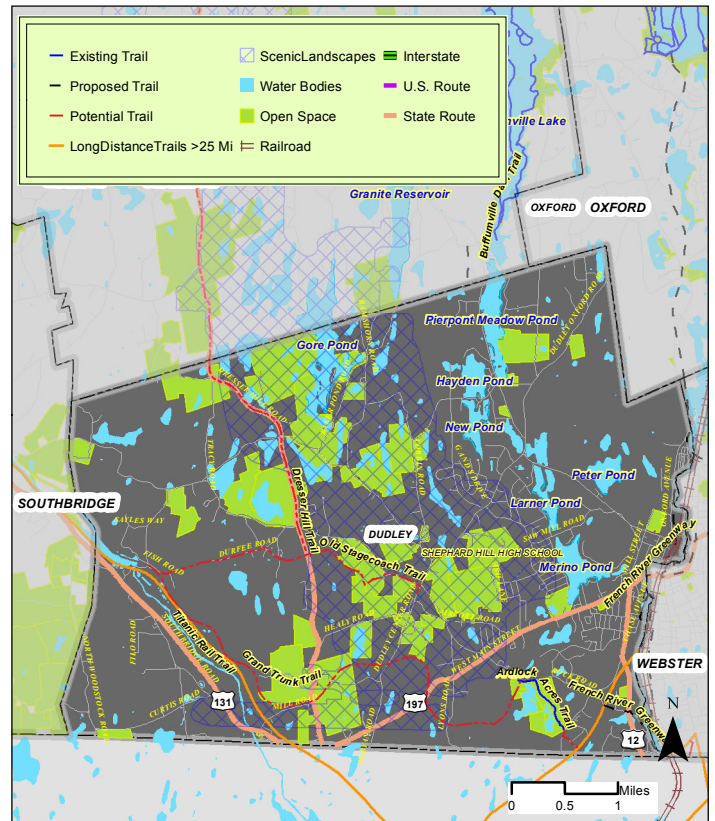
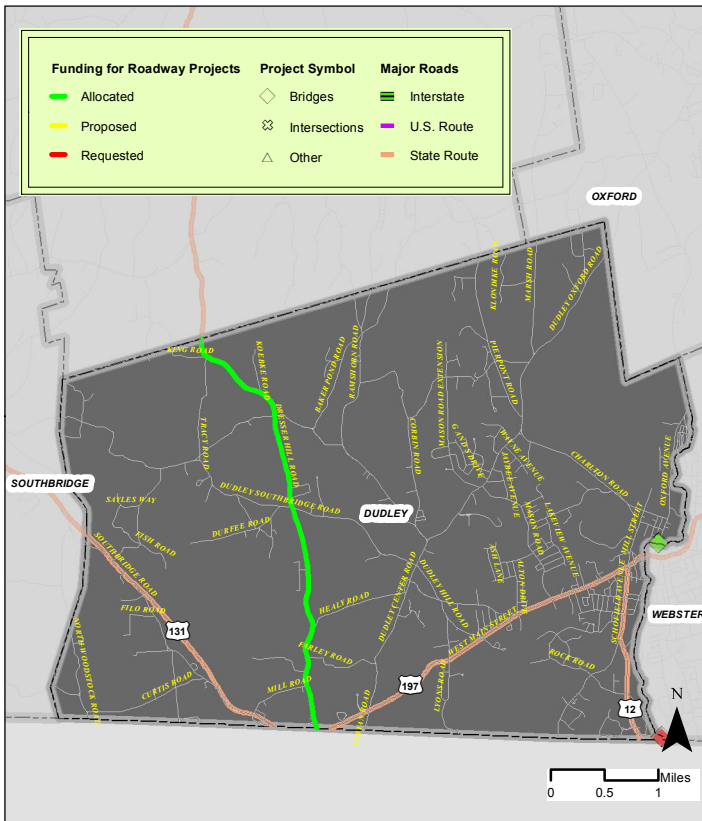
Information depicted on these maps is for planning purposes.  
Data obtained from MassDOT, MassGIS, CMRPC  
Produced by the GIS Center :  
Central Massachusetts Regional Planning Commission.  
2 Washington Sq, Union Station, 2nd Floor, Worcester,  
MA 01604-4016

This snapshot contains data on:  
Population-Economy-Housing-Education-Public Safety -Transportation  
Central Massachusetts Regional Planning Commission

## DUDLEY



www.cmrpc.org

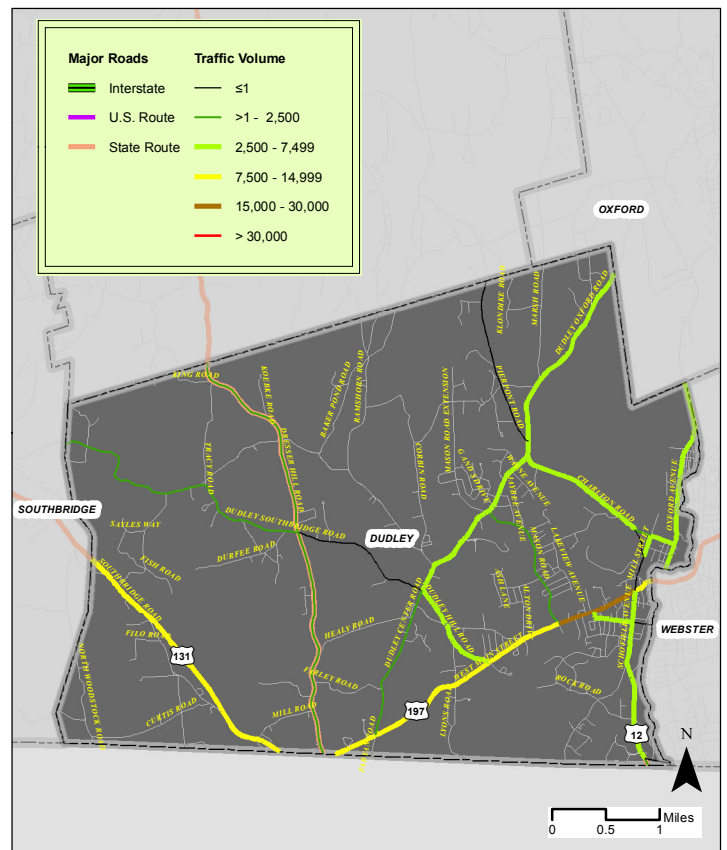
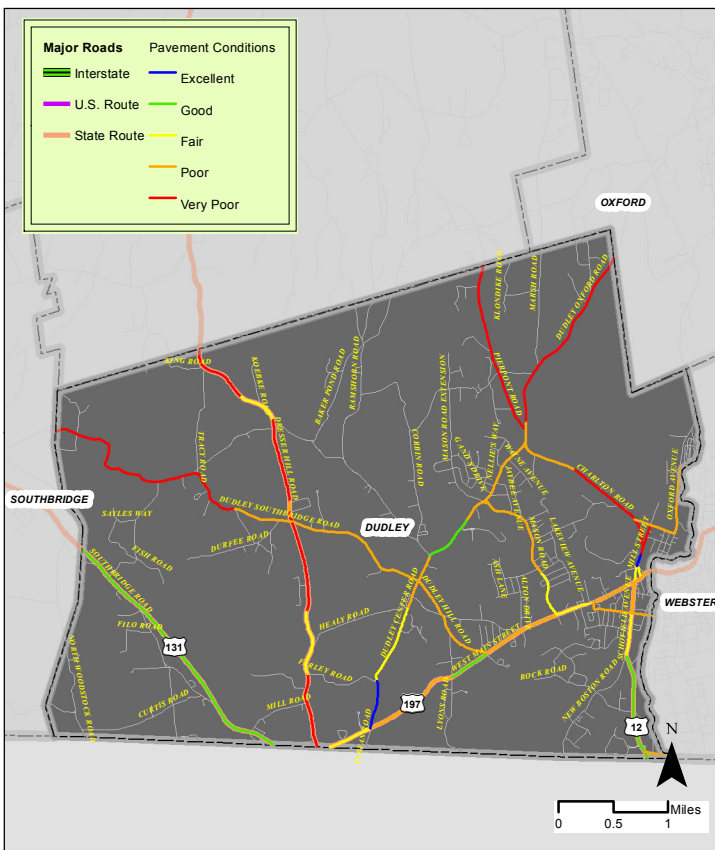


### Roadway Improvement Projects -TIP\*

Source: CMRPC

### Trails

Source: CMRPC



### Pavement Condition

Source: CMRPC

### Traffic Volume

Source: CMRPC